



C-series AI Camera

On-premise FD9380-V2 / IB9380-V2 / IT9380-V2

Cloud-native FD830 / IB830 / IT830



The C-series On-premise & Essential Cloud-native camera captures detailed 5MP resolution at 30 fps with WDR clarity, even in challenging lighting. Powered by basic AI analytics and Vision Object Analytics, it ensures that users only get the alerts that matter. With an IK10 metal housing and enterprise-grade security from Trend Micro, this camera is built for reliability, inside and out.

Features

● Hardware ● Software

5MP Resolution C-series/Essential AI Camera		H.265 Codec with Smart Stream III Bandwidth saving more than 90%	
WDR Pro 120dB		30M IR with Smart IR Balanced IR lighting for clear details	
Vandal-proof Certificated IP66, IP67, IK10 metal housing		Built-in Microphone Two-way audio	
Smart VCA Accurate detect incidents		Vision Object Analytic Detect People and Vehicles	
Think Search Available with cloud platform		Trend-Micro™ IoT Security Defend and quarantine vulnerability protection	

See More Details in 5MP Resolution with Robust Design

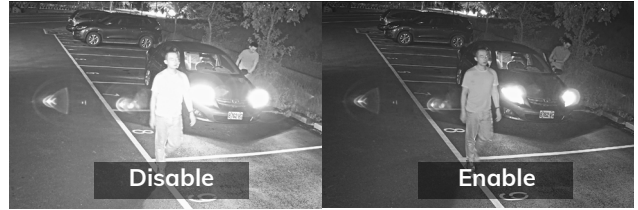
The camera captures object details with clear 5MP images at 30 fps. It features 120 dB WDR Pro for handling high-contrast scenes, Smart IR for optimal exposure, and up to 30 meters of IR coverage for 24/7 surveillance.



Clear details in 5MP Resolution



WDR Pro - Clear imaging under backlight



Smart IR - Balanced IR exposure



Metal housing with IK10 certification

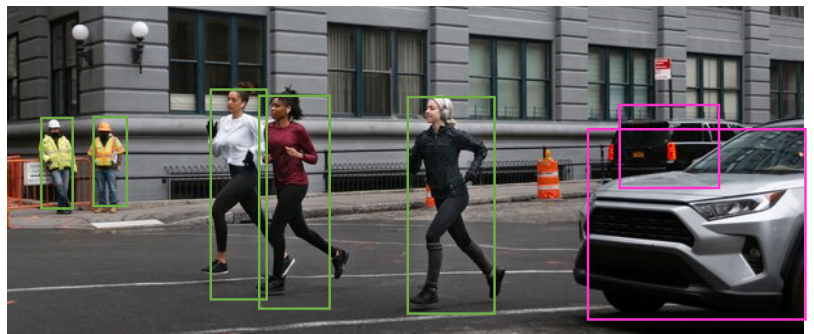
IK10 metal housing safeguards the camera from vandal attacks and retains its color for a long-lasting, polished look.

Built for Everyone: Smart, Secure, and Everyday-Ready Solution



Focus on people and vehicle

Effortlessly detect and distinguish people, vehicles with Vision Object Analytics—designed to prioritize what truly matters.



Accurate alarm with basic AI analytics



Perimeter intrusion



Fence jump

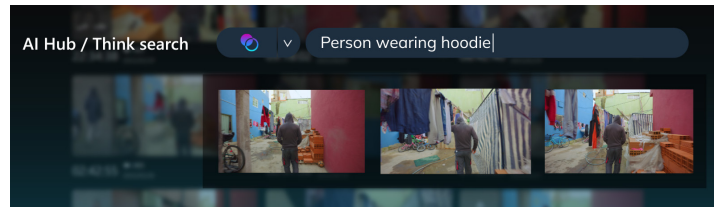


Loitering in critical location



Find critical footage faster with Think Search

Express thoughts freely and locate events instantly with Think Search. Securely archive critical evidence in the cloud, ensuring data remains protected, searchable, and immediately accessible when it matters most.



Easy Operation with VORTEX

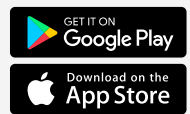
- 1 **Camera Plug & Play**
Simplify setup and monitor power with built-in PoE NVR.
- 2 **Download VORTEX app**
Get VORTEX app to create your account.
- 3 **Scan QR code**
Connect your NVR to VORTEX cloud platform.



Any Devices



Web Browser



Mobile App

Flexible Expansion



Up to 128 Cameras



Up to 10 Users

Remote Maintenance

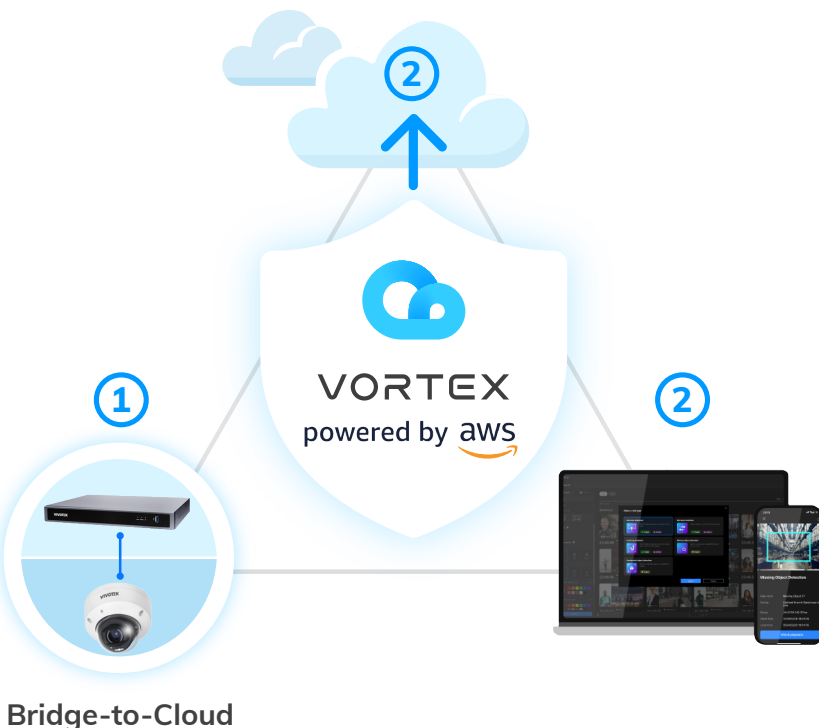


Firmware Updates



Reboot NVR

End-to-End Security, Secured Operation



1 Hardware Security



Trend Micro™ IoT Security



Signed Firmware



Secure Boot

2 Connection Security



AES-256



TLS 1.2






User Authentication






Multi-Factor Authentication (MFA)

Ordering Information

On-premise

Model	FD9380-HV-V2	FD9380-HTV-V2	IT9380-HV-V2	IT9380-HTV-V2	IB9380-HV-V2	IB9380-HTV-V2
ID						
Form Factor	Fixed Dome		Turret		Bullet	
Max. Frame Rate	30 fps @ 2880x1616					
Lens	2.8 mm	2.7 ~ 13.5mm	2.8mm	2.7 ~ 13.5mm	2.8mm	2.7 ~ 13.5mm
Aperture	F1.6	F1.6~F3.1	F1.6	F1.6~F3.1	F1.6	F1.6~F3.1
HFOV	111°	111.0° ~ 32.2°	111°	111.0° ~ 32.2°	111°	111.0° ~ 32.2°
Illuminators	30M IR					
Connector	Two-way audio, Digital input/output					
Certification	IP66, IP67, IK10					

Cloud-native

Model	FD830-HV	IT830-HV	IB830-HV
ID			
Form Factor	Fixed Dome	Turret	Bullet
Max. Frame Rate	SD: 1280 x 960; HD: 2560 x 1920		
Lens	2.8 mm	2.8mm	2.8mm
Aperture	F1.6	F1.6	F1.6
HFOV	111°	111°	111°
Illuminators	30M IR		
Connector	Two-way audio, Digital input/output		
Certification	IP66, IP67, IK10		



Contact Us

Accessory

Dome / Turret



AM-21A
L-shape Bracket



AM-51G
Adapting Plate



AM-52E
Mounting Adapter



AM-71B
Waterproof Conduit Box



AM-71D
Outdoor Conduit Box

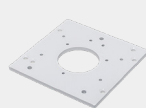
Bullet



AM-312
Pole Mount Bracket



AM-412
Corner Mount Bracket



AM-523
Adapting Plate



AM-71C
Junction Box



AM-71E
Outdoor Conduit Box



AM-71F
Indoor Conduit Box